

Soltec Crimp Camera YS-01

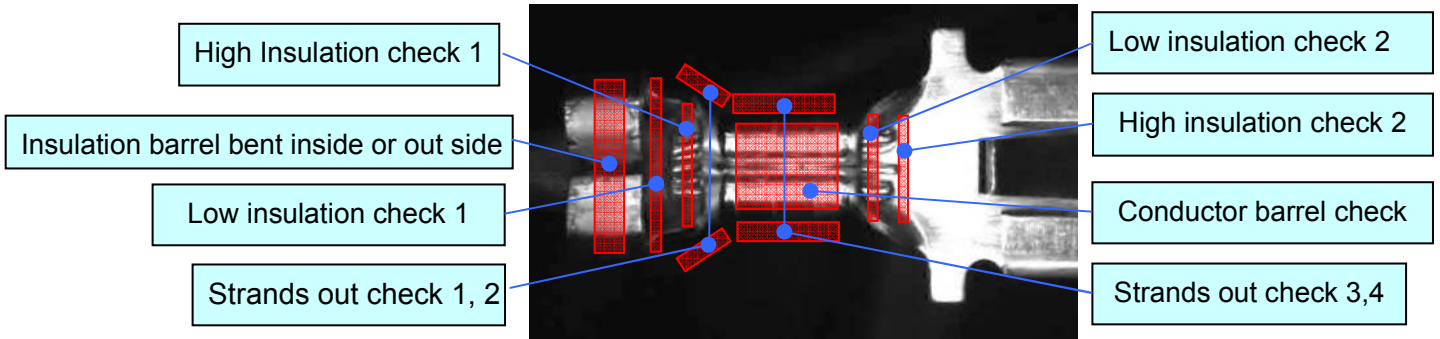
Non-stop online visual inspector for perfect terminal



Camera, lens, LED unit



Welcome to the world of **non-stop real time visual inspection** of terminal crimping quality! A newly developed high speed shutter camera on automatic terminal cutting machines can “**see**” high speed-moving crimps for image analysis. You don’t need to prepare holder or fixture guiding pieces for orientation toward camera. Its compact design allows easy mounting on very critical, small and old machines (retrofit system).



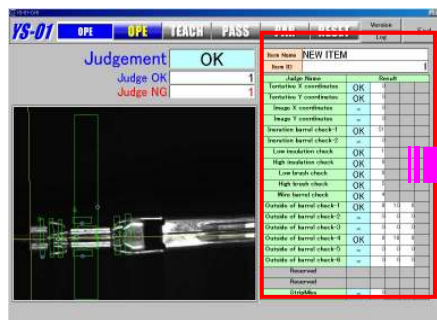
High Speed Camera Shutter and Image Alignment

Innovative LED strobe lighting for camera shutter at 1/80,000 second realizes clear stand still image. Also, image location is compensated in X, Y and inclination coordinates. Data result is output at less than 100m second.

Simple & Easy, a User Friendly Operation

Number of parameters is minimized. Based on the circuit name, respective measurement windows and fundamental conditions are already available for immediate use. So, just drag these windows on screen before inspection start!

PC monitor screen (example)



Item Name	NEW ITEM		
Item ID	1		
Judge Name	Result		
Tentative X coordinates	OK	0	
Tentative Y coordinates	OK	0	
Image X coordinates	-	0	
Image Y coordinates	-	0	
Insration barrel check-1	OK	51	
Insration barrel check-2	-	0	
Low insulation check	OK	1	
High insulation check	OK	6	
Low brush check	OK	6	
High brush check	OK	5	
Wire barrel check	OK	4	
Outside of barrel check-1	OK	8	10 6
Outside of barrel check-2	-	0	0 0
Outside of barrel check-3	-	0	0 0
Outside of barrel check-4	OK	9	18 6
Outside of barrel check-5	-	0	0 0
Outside of barrel check-6	-	0	0 0
Reserved			
Reserved			
StripMiss	-	0	

Two cameras operation with one control unit

YS-01 drives two cameras with LED strobe lights individually for automatic terminal cutting machines, Even strobe shutter timing is determined automatically. Up to 100 program files (circuit names) are saved. YS-01 can operate alone without PC except for initial registration. Select a right program number with the touch screen key.



LAN connection

Machine control I/O



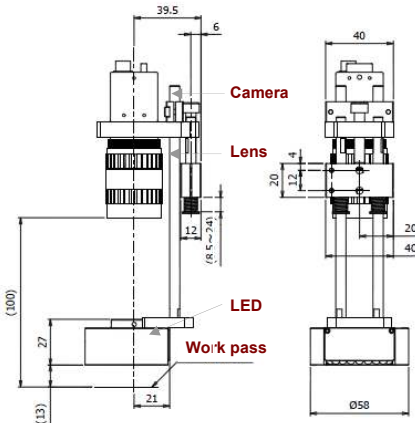
PC for parameters set

Camera Trigger Switch

Misstrip check on the outward

With machines wire feeding path line adjustable, YS01 checks wire stripping error at outward feed and inspects crimp quality at backward feed. Thus it shows technical superiority and cut machine costs.

Retrofit on terminal cutting machines



Modular and compact camera unit free from external noise consists of the link camera, lens and LED strobe flash.

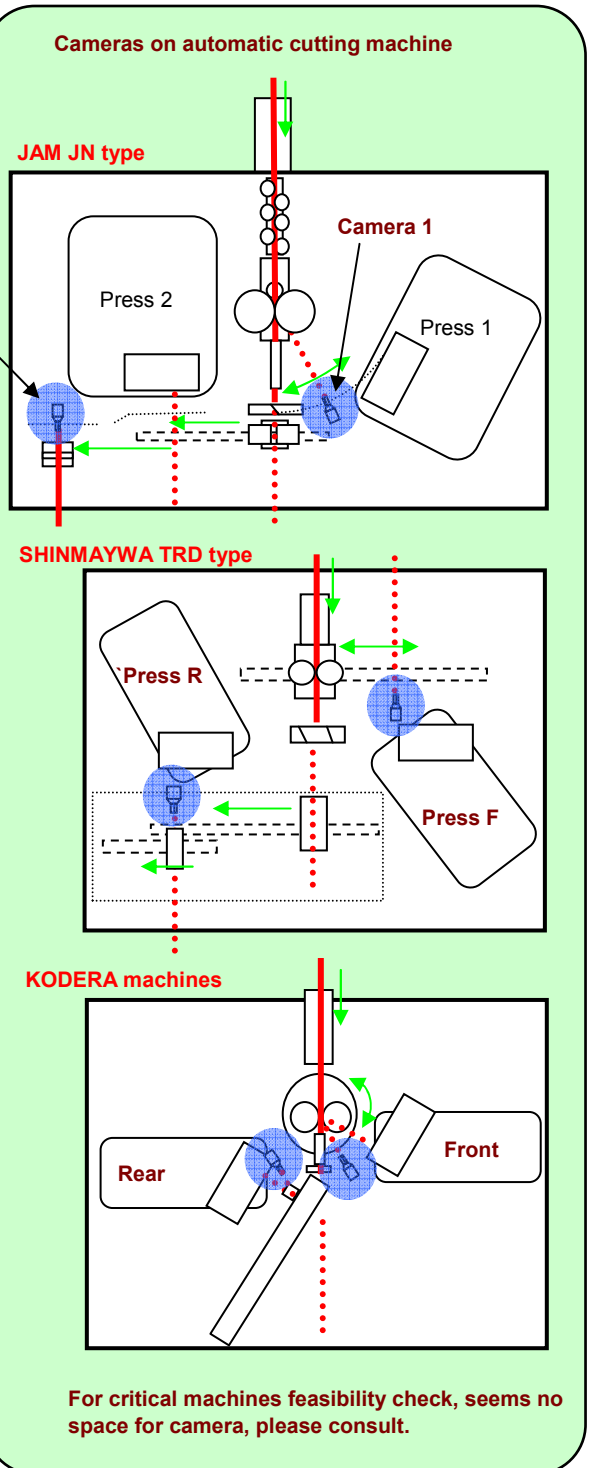
It requires only 60mm wide space. Many lenses are available for various terminals. Several choices are available for narrower spaces of presses, too.

Basic technical specifications

Target wire sizes	0.08 sq ~3 sq (AWG28~AWG10)
Wire passing speed	2.5m/sec
Camera shutter speed	Max. 1/80,000 sec. (12.5μsec)
Camera connection	2 sets
Image resolution	640x480 pixels (black & white)
LED strobe flash time	10msec.
Measurement time	100msec.(trigger to judgment result)
Program number	100

YS01

Unit size	342×300×180mm
Weight	5.0kg
Power source	AC100~AC240V
Recommended PC	Intel® Cor™i7 or higher on Windows XP / 7



True Soltec Co., Ltd.

Post 350-1135 Suna 906-5 Kawagoe, Saitama, Japan
 TEL: +81 49-242-9184 FAX: +81 49-242-3190
 Email: info@truesoltec.co.jp
 www.trueostec.co.jp