



Inline Quality Inspection System

New

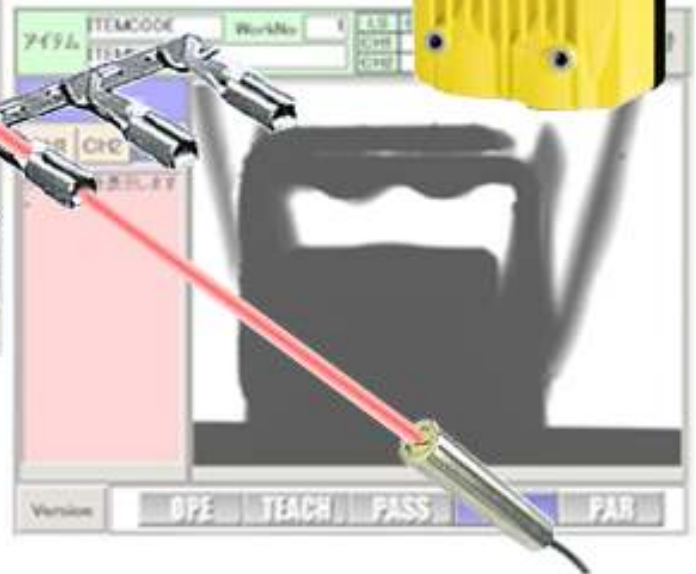
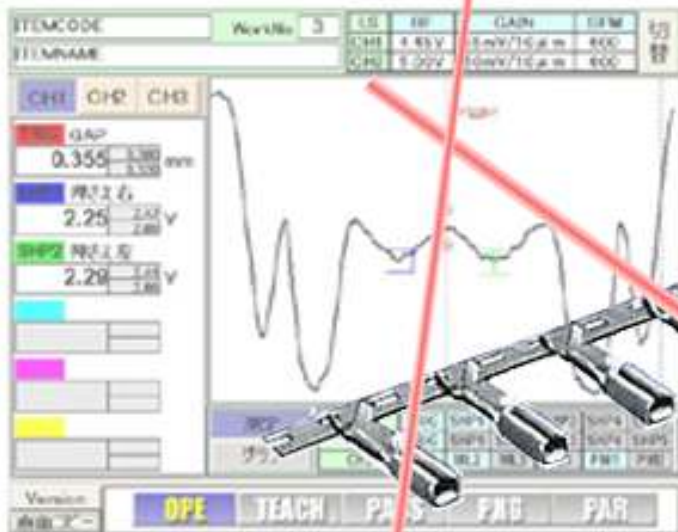
Do not miss any defect at stamping !

TSJ-05



Laser and camera are sensitive enough for all measurements

Laser sensors look inside connector and monitor pin-points accurately. Camera measures outer dimension and checks surfaces.

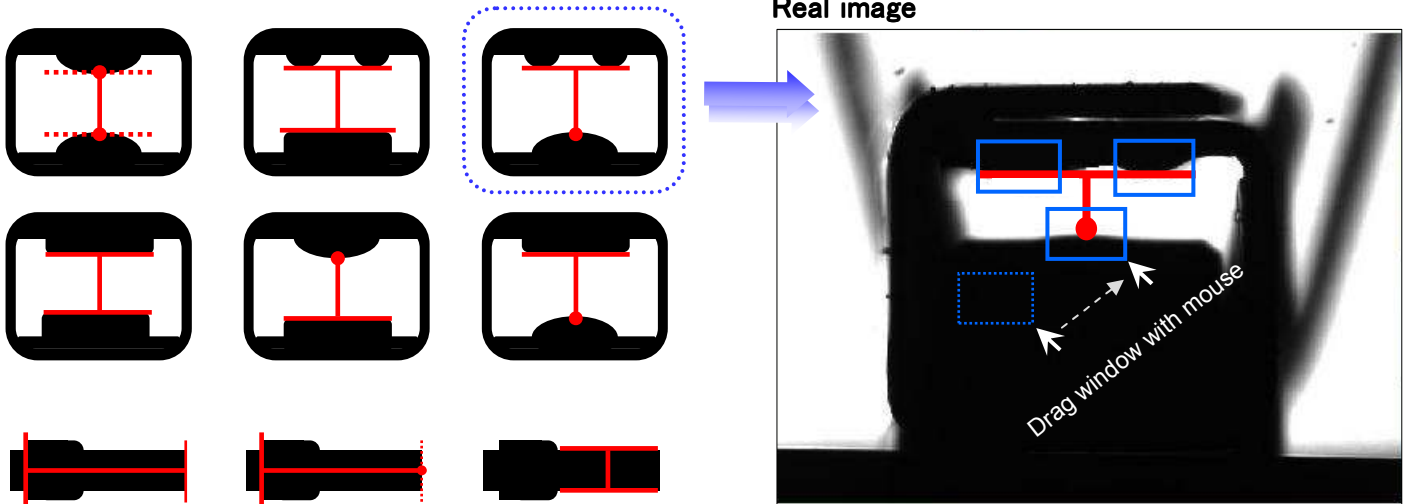


TRUE SOLTEC

Main features

1. Easy setup with template menu ♦Camera♦

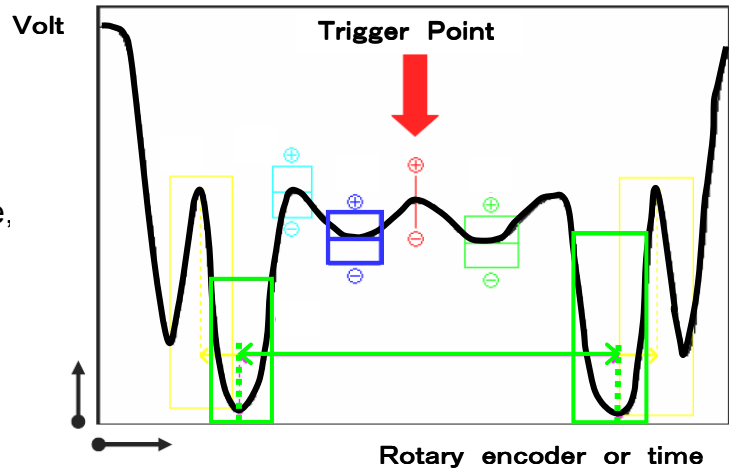
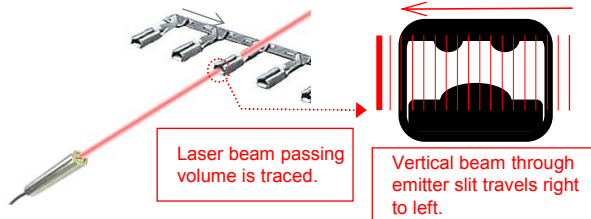
Popular tools for connector measurement are ready for quick setup. Even sophisticated parameters become easy. Select a right gap pattern from menu and adjust windows. That's all.



2. Beam locus monitor and tools

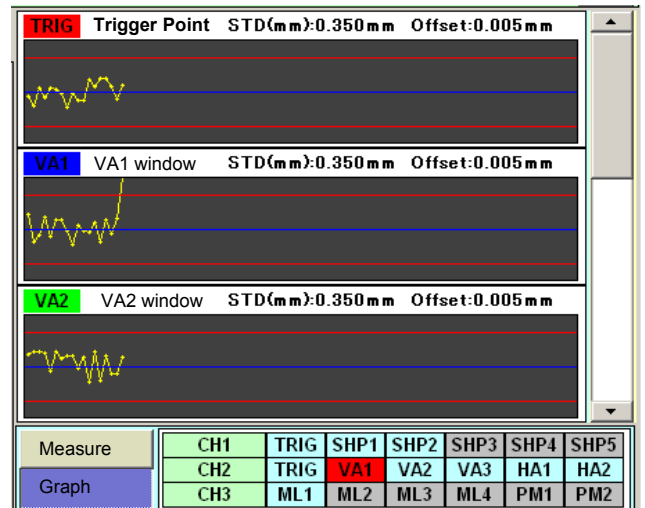
♦Laser sensor♦

Setting windows on the beam curve, trigger point value, dimple values (blue & green boxes) and spring width (horizontal distance, green-green) are measured. ※1



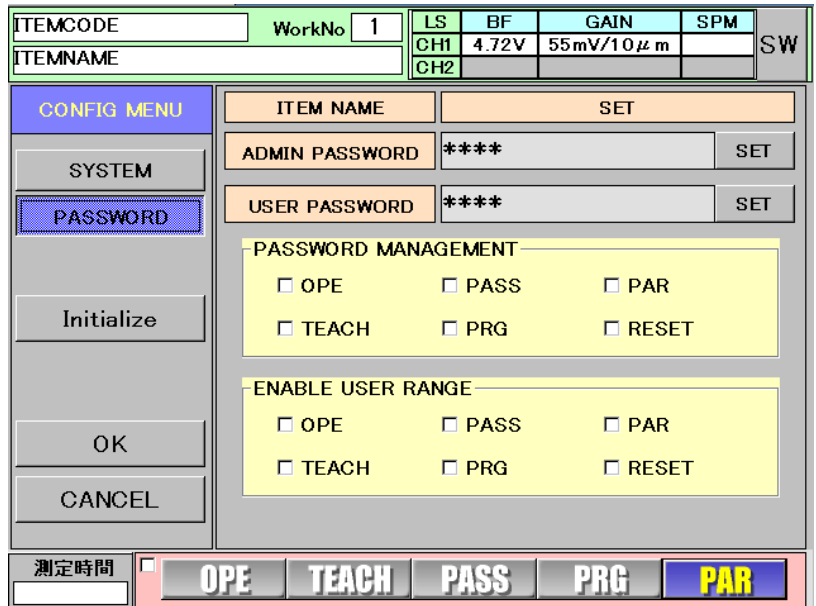
3. Ensure good parts being produced

Measured data and their chart graphs assure your manufacturing process remain quality capable while in producing every piece.



4. Flexibility and Protection

Simple and rational parameters in menu are available for operators to complete setup work with exact and user-friendly manner. For example, several stages of parameters protection system are provided depending on site conditions.

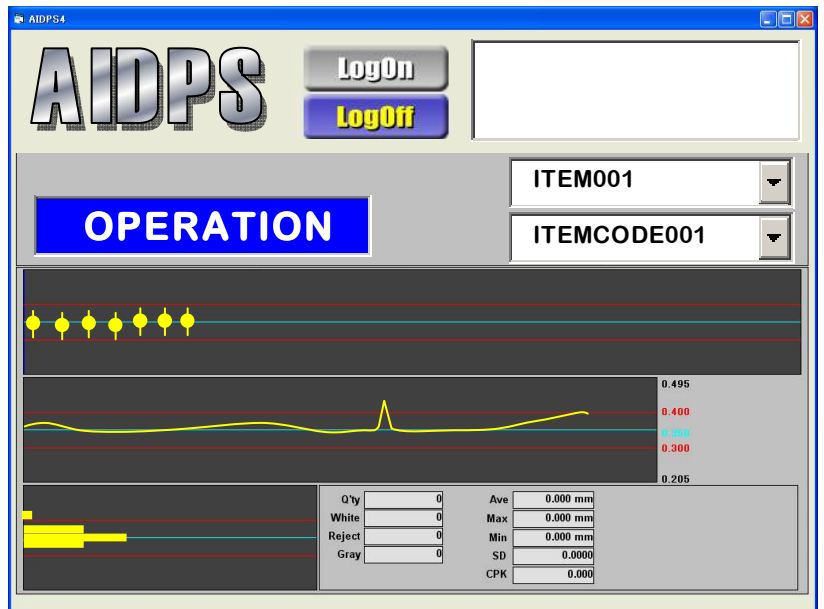


5. Data storage and display

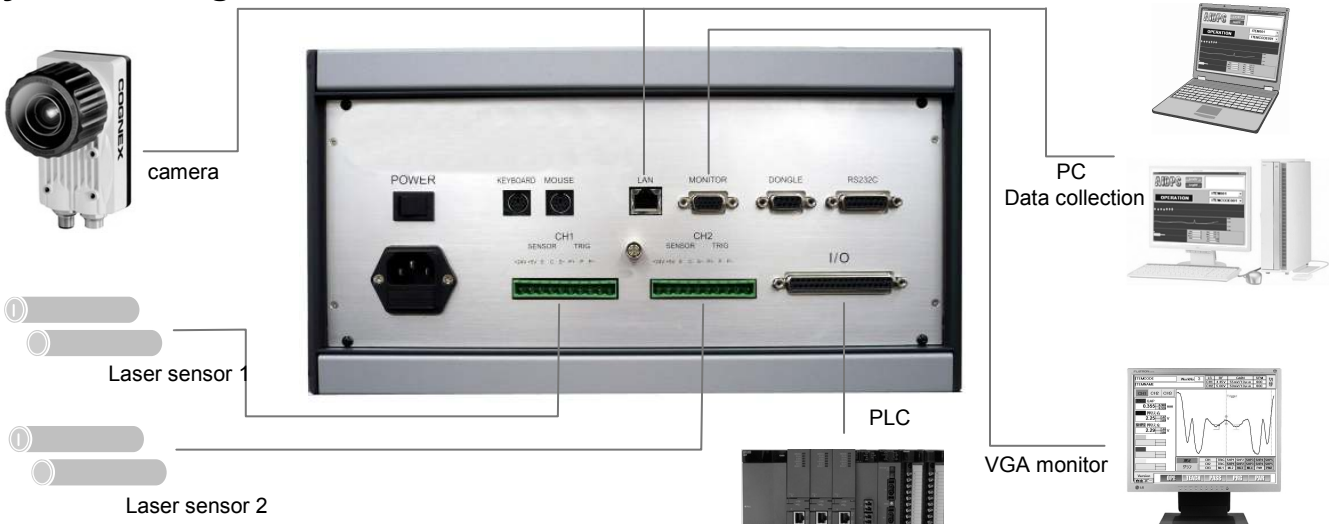
Measurement data will be stored in the server via Ethernet (Network of quality info).

They are edited in the trend graph, histogram and reel graph (max. ave. & min. data per reel) in real time mode.

The reel start and end signals are, for example, provided by winder. Like this, it can flexibly linked with peripherals.



System configuration



■ Specifications ■

| | | |
|------------------------|-------------|---|
| Dimensions | | 342.2mm (W)×184mm (H)×315.5mm (D) |
| Weight | | About 5 kg |
| Main PC | CPU | VIA Mark Core Fusion |
| | Main memory | 256MB |
| | DISK | EMBEDDED DISK |
| | LAN | Realtek 8100B 10/100Mbps |
| | OS | WindowsXP Embedded |
| I/O | Input | Photo coupler input 8 points (Reel cut signal, Reset sig., camera stop sig., motor start/stop sig. Work No Request sig. & 3 programmable signals) |
| | Output | Relay output x 2 (machine stop and other programmable signal) Photo coupler output 6 points [OK/NG sorting sig., PASS mode sig. Work No set (synchronous serial CLK signal, Data signal), reserved 2 signals] |
| Trigger input | | Sensor use 2 inputs |
| Sensor | 24V output | Each channel max. 100mA ※2 |
| | 5V output | Each channel max. 100mA ※2 |
| Measure | Meas. CH | |
| | Sens. | Laser sensor, analog voltage 0~+5V |
| | Camera | COGNEX INSIGHT series 5400 or higher |
| Resolution | Laser | 1 μ m (LED ladder bar :1 μ m,5 μ m, 10 μ m,20 μ m or 50 μ m) |
| | Camera | 1 μ m |
| Max. Meas. Cycle times | | Laser: 1300 pieces/min., Camera:1000 pieces/min. |
| Poser source | | AC100~240V (1A) |
| Operating temperature | | 0°C~40°C (Operation) -10°C~50°C (storage) |
| Operating humidity | | 35%~85%、 no dew (operation and storage) |

※2 24V and 5V cannot be used simultaneously.

For other products
<http://truesoltec.co.jp>



Manufacture and Sales

True Soltec Co., Ltd.

Postal code 350-1133, Suna 906-5,

Kawagoe City, Saitama, Japan

TEL: 049-242-9184/FAX: 049-242-3190

Email: info@truesoltec.co.jp