

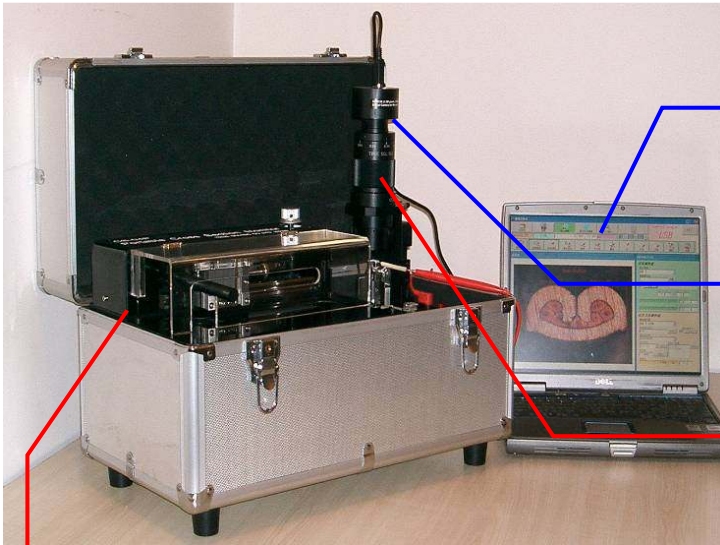
Cross Section Monitor of crimped sample

Portable mode I

Portable Cross Section System

CS-04PC

All functions are packed in one portable case. You can carry it anywhere you want.
5 minutes for whole process. No hardening is required!



Vision Analysis PC software (optional)

A frame grabber circuit board is not required for PC.
A notebook size laptop PC shows image for full analysis.

USB Camera (optional)

1.3M pixels. USB2.0

Microscope Lens

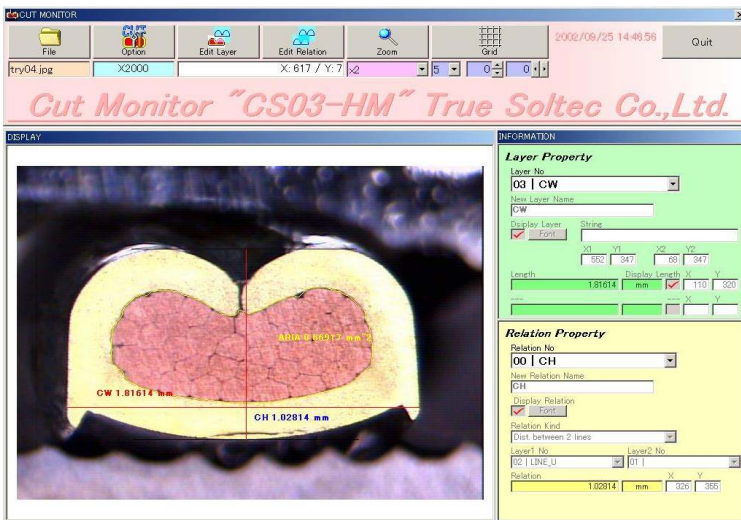
X45 to x 260 zooming lens. LED lights are built-in.

Handle for cutting and grinding

Sample clamped by holder is fed to a high fine cutter and grinder at a time. Max clamping size is 3mm sq.

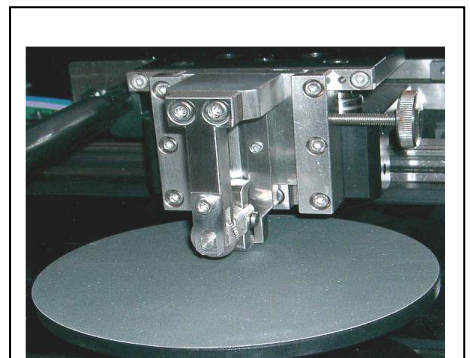
Image Analysis PC software CS03-HM-USB (Optional)

User friendly programming to measure C/H, C/W, areas, angles, etc. Data will be exported to Excel as report format.



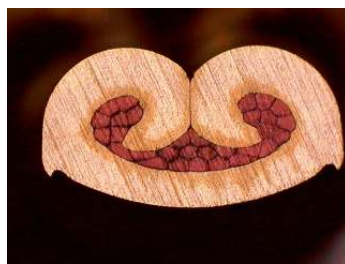
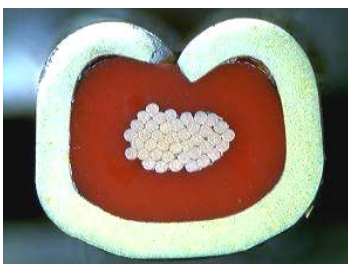
Fine Cutter

Automatic sample feeding toward the fine cutter disc (thickness 0.5mm) to guarantee high quality cut surface.

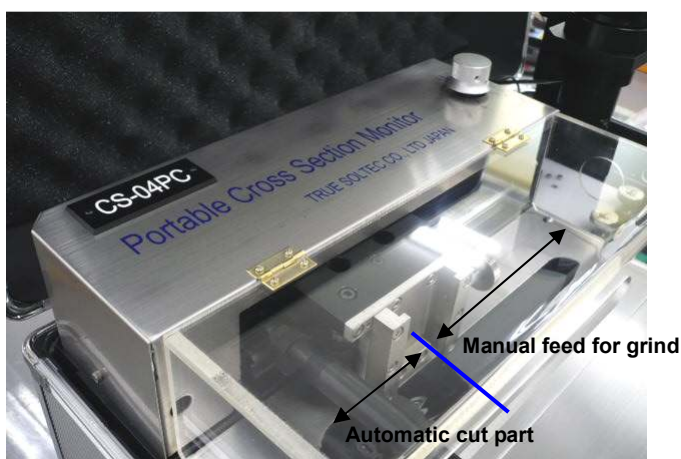


Grinder

Dry type #1200 sand paper polishes the cut surface in seconds.



Portable Cross Section System



Fine cutting and grinding

Setting the sample piece to the clamp holder designed for one touch operation, you push the start button. The clamp holder automatically moves toward the high-speed fine cutter and moves back to home point. Then hold the handle and feed it toward the disc type paper grinder. This process is manual because grinding touch is very delicate depending on material hardness and size.

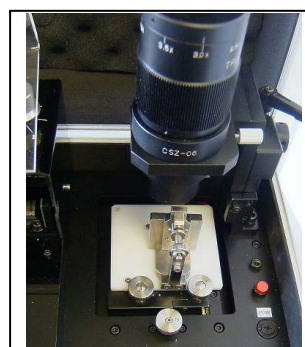
Total time is normally 2 – 3 minutes.

Protected with a cover

Moving parts are all covered. The cover is interlocked for stopping at uncover.

LED lights built-in microscope

x 6 zooming lens (optically x 0.75– x 4.5) is employed. With the USB II camera (1.3 M pixels), you can monitor clear image of the cut surface. If you use 14" CRT, zooming ratio is x45 to x260. AWG30 or smaller samples can be seen very clearly. Also, the white LED is built-in the skirt of lens with beam volume controller. This system is designed for compact and convenient operation of all processes in a portable case. The lens collapses at closing the case cover.



Fine positioning under microscope

For easier positioning of samples with focusing, X, Y and Z axes adjusters are convenient.

◆◆Portable cross section monitor, CS04PC◆◆

Drive	DC motor
Wire size available	AWG36 to AWG12
Disc type fine cutter	Dia. 75mm x 0.5mm
Grinder	Dia. 120mm (#1200)
LED lighting	White LED 6 pcs. 8W
Power Source	AC100V~240V (50/60Hz)
Power consumption	70W
Outer dimensions	W270 x D490 x H315
Weight	17kg

1.3M pixels USB camera

CCD image	1/2" CMOS 1.3 M pixels
Pixel size	5.2 x 5.2 micron meter
Dynamic range	62 dB
Max. resolution	1280 x 1008
Exposure	Automatic
Shutter	Automatic
System	Windows 2000 / XP (USB2.0 port equipped model)

Zoom lens	
Model	CSZ-06P
Zooming	X 0.75 to x 4.5 (6 times zooming)
Working distance	27.4
Effective Fno	11 (x 0.75)
Focusing depth	1.5mm(x0.75) / 0.1mm (x4.5)
NA	0.04 (x0.75) / 0.1 (4.5)
Eye piece	x 20 unit is standard accessory
Max available CCD	1/2" and 1/3"
Camera mount	Exclusive mounting

Option	Auxiliary lens of the low magnification
X 0.3	Max. view field 24mm x 32mm
X 0.6	Max. view field 11mm x 14mm



Manufacturing and Sales by
True Soltec Co., Ltd.

Post code: 350-1133 Suna 906-5, Kawagoe City, Saitama Pref., Japan

Tel: +81 49 242 9184 Fax: +81 49 242 3190

e-mail: info@truesoltec.co.jp